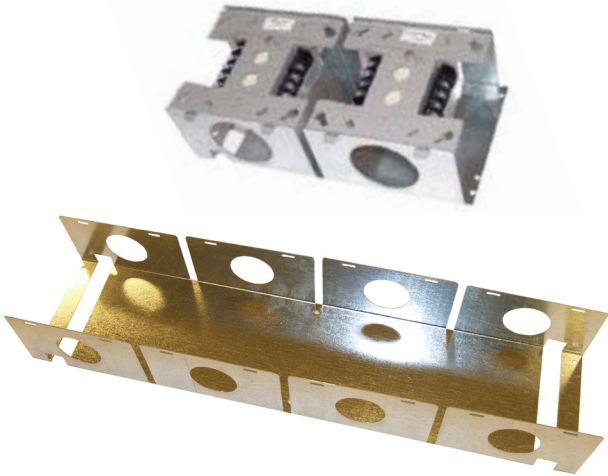


**NO  
EXCUSES!**

# FR4



## Fast Rail 2 and 4 Module Holders

The FR2/4 fast rail system is designed to hold from two to four System Sensor style addressable modules with a quick snap in assembly.

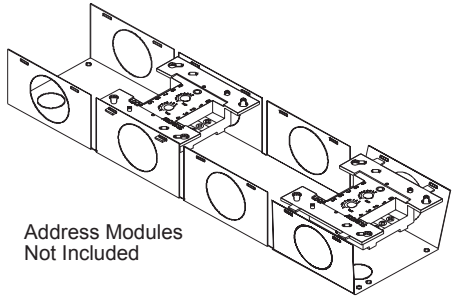
Each address module is installed independently with the terminal field connections and address dials easily accessible after installation for serviceability. The FR4 is supplied with edge protectors to eliminate wire shorts when pulling wire chases.

The fast rails are manufactured from durable 22 gauge galvanized steel and is designed with multiple mounting hole patterns for wall or cabinet mount. Measurements are 4.5" long x 4 5/16" wide x 2 1/2" deep for the FR2 and 18" long x 4 5/16" wide x 2 1/2" deep for the FR4.

The fast rail system is ideally suited for the Space Age ACE cabinet size A (SSU00655) or D (SSU00657) as well as the AC2 cabinet (SSU00656) for a professional installation. The key feature of these cabinets is the key access and a lift away removable door to access the address modules and field wiring thus allowing you time saving maintenance and trouble shooting of the system.

## Standard Features:

- Secures 4 System Sensor modules (4" square)
- Spring loaded snap in design
- 24 gauge steel construction
- Durable galvanized finish
- Wire chase for vertical or horizontal
- Edge protector to eliminate wire cuts
- Mounting hole pattern for wall or cabinet mount



## Optional Cabinets:

- ACE A holds 4 FR2 or 2 FR4 rails (SSU00655)
- ACE D holds 8 FR2 or 4 FR4 rails (SSU00657)
- AC2 holds 2 FR2 rails (SSU00656)

## Ordering Info:

| Part #   | Description   |
|----------|---------------|
| SSU00452 | FR2 Fast Rail |
| SSU00457 | FR4 Fast Rail |



**ISO 9001  
REGISTERED  
COMPANY**



**ACE BOX**

Space Age Electronics, Inc.  
www.1sae.com  
**800.486.1723** Toll Free  
508.485.0966 Local  
508.485.4740 Fax

This document is subject to change without notice, see doc # ED0479 for legal disclaimer

*No Excuses, Just Solutions!*